

INTERNATIONAL

Intex Development Co., Ltd.  
9th Floor, Everbright Centre,  
108 Gloucester Road, Wanchai,  
Hong Kong  
Tel: (852) 2827-0000  
Fax: (852) 2311-8200  
E-mail: info@intexdevelopment.com  
Web: www.intexdevelopment.com

USA

Intex Recreation Corp.  
P.O. Box 1440,  
Long Beach, CA 90801-1440, USA  
Tel: (310) 549-5400  
Fax: (310) 513-6905  
Web: www.intexcorp.com

EUROPE

Intex Trading B.V.  
Venneveld 9,  
4705 RR Roosendaal,  
The Netherlands  
Tel: (31) 165-593920  
Fax: (31) 165-593969  
E-mail: info@intexcorp.nl  
Web: www.intexcorp.nl

Intex Trading s.r.o.  
Benešovská 23  
101 00 Praha 10  
Czech Republic  
Tel: (420) 267 312 645  
Fax: (420) 267 312 552  
E-mail: info@intexcorp.cz  
Web: www.intexdevelopment.com

Unitex Service (France) S.A.S.  
Z.A. de Milleure Bois du Ban - N°4  
71480 LE MIROIR, France  
Tel: (33) 385 75 64 64  
Fax: (33) 385 75 64 65  
E-mail: info@intexcorp.com.fr  
Web: www.intex.fr

**INTEX**

©2019 Intex Marketing Ltd. - Intex Development Co., Ltd. - Intex Recreation Corp.  
All rights reserved. Printed in China.  
\*\*\* Trademarks used in some countries of the world under license from Intex Marketing Ltd. to Intex Development Co., Ltd., G.P.O Box 28829, Hong Kong, and Intex Recreation Corp., P.O. Box 1440, Long Beach, CA 90801.



Sand & Summer  
COLLECTION



2020



# Sand & Summer COLLECTION

Spice up your summer pool party with the Sand & Summer Collection by Intex. Perfect for your inner beach bunny, our collection features the coolest must-have novelty inflatables. No matter the summer occasion, we are sure to have the style for you. Whether you're at the pool or the beach, we are committed to making sure you have the summer you deserve, a summer of fun, style and luxury.

# Aloha Summer

**56265NP/EP  
RAINBOW DONUT TUBE**

- Deflated 42" (1.07m)
- Inflated 37" x 9" (94cm x 23cm)
- 10ga (0.25mm) vinyl
- Fun donut design
- Repair patch
- Shelf box
- 176 lb (80 kg) max weight limit
- 12 ea, 15.5 lb (7.0 kg)

56265NP **AGE 9+**

56265EP **AGE 14+**

**58770EU/EP  
VANILLA CUPCAKE MAT**

- Deflated 56" x 53" (1.42m x 1.35m)
- Inflated 52" L x 50" W x 9" H (1.32m x 1.27m x 23cm)
- 11ga (0.28mm) vinyl
- Cupcake design
- Repair patch
- Shelf box
- 220 lb (100 kg) max weight limit
- 6 ea, 19.1 lb (8.7 kg)

**56262NP/EP  
NUTTY DONUT TUBE**

- Deflated 45" (1.14m)
- Inflated 39" x 10" (99cm x 25cm)
- 10ga (0.25mm) vinyl
- Fun donut design
- Repair patch
- Shelf box
- 220 lb (100 kg) max weight limit
- 12 ea, 18.1 lb (8.2 kg)

56262NP **AGE 9+**

56262EP **AGE 14+**

**56263NP/EP  
SPRINKLE DONUT TUBE**

- Deflated 45" (1.14m)
- Inflated 39" x 10" (99cm x 25cm)
- 10ga (0.25mm) vinyl
- Fun donut design
- Repair patch
- Shelf box
- 220 lb (100 kg) max weight limit
- 12 ea, 18.1 lb (8.2 kg)

56263NP **AGE 9+**

56263EP **AGE 14+**



# Sparkle



**56810NP/EP**  
**GLITTER MEGA CHILL**

- Deflated 30" (76cm)
- Inflated 29" x 13" (74cm x 33cm)
- 12ga (0.30mm) vinyl
- 5 built-in cup holders
- Floating cooler keeps your drinks cold
- Gold and pink glitter filled
- Repair patch
- Shelf box

6 ea, 19.4 lb (8.8 kg)



**58070NP/EP**  
**GLITTER BEACH BALLS**

- Deflated 28" (71cm)
- Inflated 20" (51cm)
- 9ga (0.23mm) vinyl
- Gold / Pink glitter filled
- Repair patch
- Shelf box

12 ea, asst. 8.5 lb (3.9 kg)



**56251NP/EP**  
**GLITTER FLAMINGO TUBE**

- Deflated 47" x 38" (1.19m x 97cm)
- Inflated 39" L x 35" W x 28" H (99cm x 89cm x 71cm)
- 10ga (0.25mm) vinyl
- Gold and pink glitter filled
- Repair patch
- Shelf box

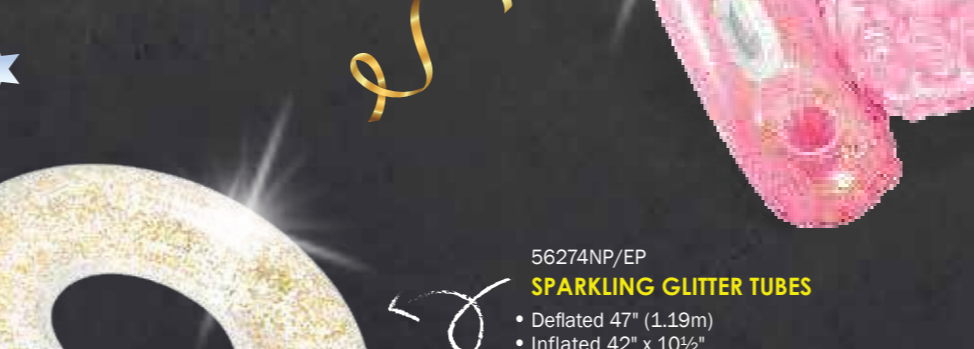
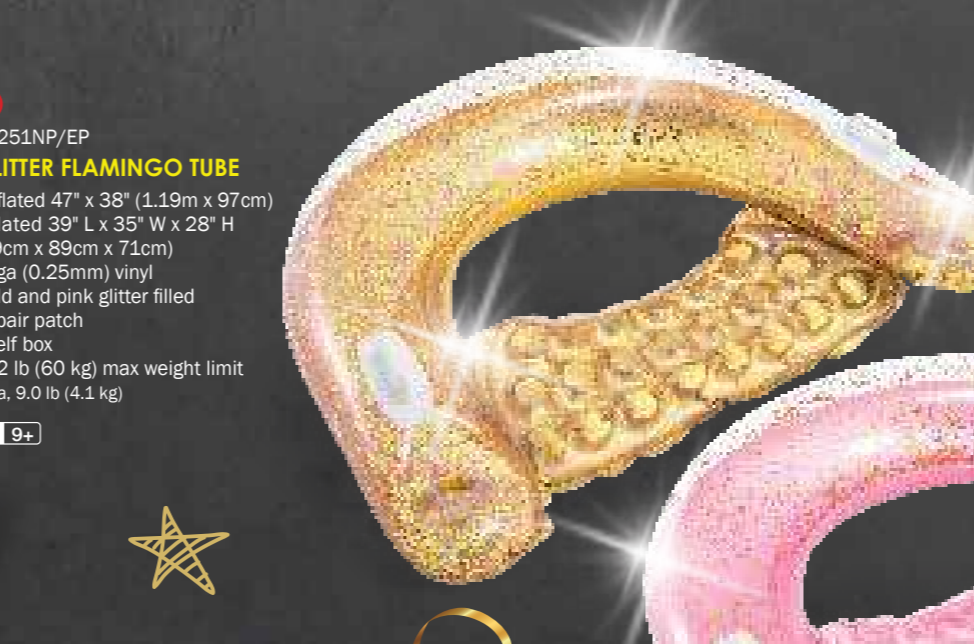
132 lb (60 kg) max weight limit  
6 ea, 9.0 lb (4.1 kg)



**57103NP/EP**  
**GLITTER MINI POOL**

- Deflated 31" (79cm)
- Inflated 34" x 10" (86cm x 25cm)
- 8ga (0.20mm) rings;
- 7ga (0.18mm) floor
- Three glitter filled rings
- Soft inflatable floor
- Capacity 6" (15cm) of wall height: 15 gal (56L)

• Repair patch  
• Shelf box  
6 ea, 10.8 lb (4.9 kg)



**56274NP/EP**  
**SPARKLING GLITTER TUBES**

- Deflated 47" (1.19m)
- Inflated 42" x 10½" (1.07m x 27cm)
- 12ga (0.30mm) vinyl
- Gold / Pink glitter filled
- Repair patch
- Shelf box

220 lb (100 kg) max weight limit  
6 ea, asst. 12.4 lb (5.7 kg)



**56274NP** AGE 9+  
**56274EP** AGE 14+



**58720EU/EP**  
**PINK GLITTER MAT**

- Deflated 72" x 27" (1.83m x 69cm)
- Inflated 67" L x 21" W x 6" H (1.70m x 53cm x 15cm)
- 8ga (0.20mm) vinyl
- Float around in style
- Gold and pink glitter filled
- Repair patch
- Shelf box

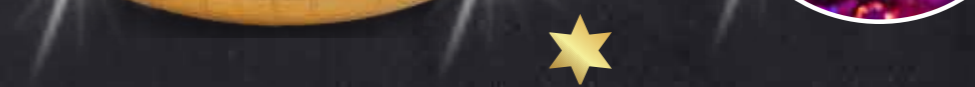
220 lb (100 kg) max weight limit  
6 ea, 10.3 lb (4.7 kg)



**56258EU/EP**  
**GLITTER MERMAID TUBE**

- Deflated 69" x 47" (1.75m x 1.19m)
- Inflated 58" L x 42" W x 31" H (1.47m x 1.07m x 79cm)
- Luxurious mermaid tail design
- 12ga (0.30mm) vinyl
- Repair patch
- Shelf box

220 lb (100 kg) max weight limit  
6 ea, 17.5 lb (8.0 kg)



**56803EU/EP**  
**SHIMMERING GOLD LOUNGE**

- Deflated 74" x 53" (1.88m x 1.35m)
- Inflated 69" L x 47" W x 24" H (1.75m x 1.19m x 61cm)
- Glamourise your pool party
- 2 air chambers
- 1 cup holder

• 16ga (0.40mm) vinyl  
• Repair patch  
• Shelf box  
• 220 lb (100 kg) max weight limit  
3 ea, 21.1 lb (9.6 kg)



**57257EU/EP**  
**SHIMMERING SEASHELL ISLAND**

- Deflated 75" x 69" (1.91m x 1.75m)
- Inflated 70" L x 65" W x 9½" H (1.78m x 1.65m x 24cm)
- 12ga (0.30mm) vinyl
- Luxurious pearlescent pink color
- Pink and iridescent glitter filled
- 2 heavy duty handles
- 2 cup holders
- Repair patch
- Shelf box

440 lb (200 kg) max weight limit  
3 ea, 22.0 lb (10.0 kg)



bling bling

**57509NP/EP**  
**GLITTER CURLY NOODLE**

- Deflated 71" x 11" (1.80m x 28cm)
- Inflated 71" L x 9" W x 6" H (1.80m x 23cm x 15cm)
- 10ga (0.25mm) vinyl
- Perfect for pool parties
- Gold and pink glitter filled
- Repair patch
- Shelf box

88 lb (40 kg) max weight limit  
6 ea, 5.7 lb (2.6 kg)  
not available in EU





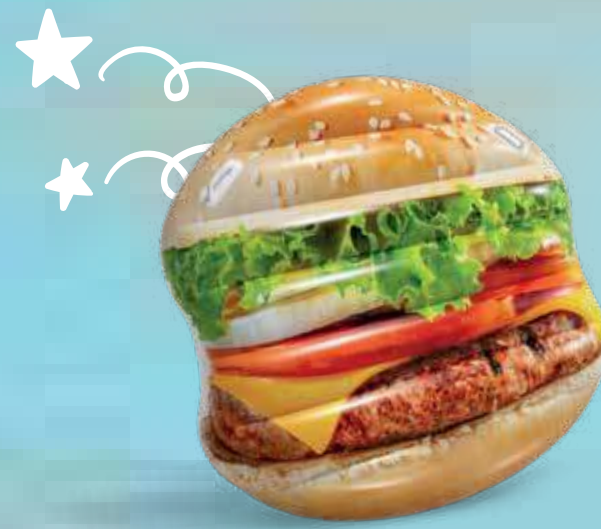
58762EU/EP  
**SPRINKLE ICE CREAM MAT**  
 • Deflated 88" x 42" (2.24m x 1.07m)  
 • Inflated 83" L x 38" W x 9½" H (2.11m x 97cm x 24cm)  
 • 12ga (0.30mm) vinyl  
 • Ice-cream design  
 • Repair patch  
 • Shelf box  
 • 220 lb (100 kg) max weight limit  
 6 ea, 21.2 lb (9.6 kg)

58766EU/EP  
**RAINBOW POPSICLE FLOAT**  
 • Deflated 75" x 30" (1.91m x 76cm)  
 • Inflated 72" L x 26" W x 8" H (1.83m x 66cm x 20cm)  
 • 11ga (0.28mm) vinyl  
 • Realistic colorful popsicle design  
 • Repair patch  
 • Shelf box  
 • 220 lb (100 kg) max weight limit  
 6 ea, 14.8 lb (6.7 kg)



58751EU/EP  
**WATERMELON POPSICLE FLOAT**  
 • Deflated 75" x 30" (1.91m x 76cm)  
 • Inflated 72" L x 26" W x 8" H (1.83m x 66cm x 20cm)  
 • 11ga (0.28mm) vinyl  
 • Realistic watermelon design  
 • Repair patch  
 • Shelf box  
 • 220 lb (100 kg) max weight limit  
 6 ea, 14.8 lb (6.7 kg)

58753EU/EP  
**RAINBOW LOLLIPOP FLOAT**  
 • Deflated 82" x 53" (2.08m x 1.35m)  
 • Inflated 78" L x 50" W x 9½" H (1.98m x 1.27m x 24cm)  
 • 12ga (0.30mm) vinyl  
 • Realistic lollipop design  
 • Repair patch  
 • Shelf box  
 • 220 lb (100 kg) max weight limit  
 6 ea, 26.7 lb (12.2 kg)



58780EU/EP  
**JUICY HAMBURGER ISLAND**  
 • Deflated 57" x 56" (1.45m x 1.42m)  
 • Inflated 53" L x 50" W x 9" H (1.35m x 1.27m x 23cm)  
 • 11ga (0.28mm) vinyl  
 • Realistic Printing  
 • 2 heavy duty handles  
 • Repair patch  
 • Shelf box  
 • 220 lb (100 kg) max weight limit  
 6 ea, 27.1 lb (12.3 kg)



58775EU/EP  
**FRENCH FRIES FLOAT**  
 • Deflated 69" x 52" (1.75m x 1.32m)  
 • Inflated 66" L x 47" W x 7" H (1.68m x 1.19m x 18cm)  
 • 12ga (0.30mm) vinyl  
 • French fries design  
 • Repair patch  
 • Shelf box  
 • 220 lb (100 kg) max weight limit  
 6 ea, 25.9 lb (11.8 kg)

*Tasty*



58777EU/EP  
**BERRY DRINK FLOAT**  
 • Deflated 78" x 42" (1.98m x 1.07m)  
 • Inflated 72" L x 38" W x 8" H (1.83m x 97cm x 20cm)  
 • 12ga (0.30mm) vinyl  
 • Frozen drink design  
 • Repair patch  
 • Shelf box  
 • 220 lb (100 kg) max weight limit  
 6 ea, 21.1 lb (9.6 kg)



58778EU/EP  
**SPARKLING SODA MAT**  
 • Deflated 70" x 36" (1.78m x 91cm)  
 • Inflated 66" L x 33" W x 11" H (1.68m x 84cm x 28cm)  
 • 11ga (0.28mm) vinyl  
 • Realistic Printing  
 • Repair patch  
 • Shelf box  
 • 220 lb (100 kg) max weight limit  
 6 ea, 20.6 lb (9.4 kg)



58771EU/EP  
**JUMBO HOT DOG MAT**  
 • Deflated 71" x 35" (1.80m x 89cm)  
 • Inflated 68" L x 30" W x 8" H (1.73m x 76cm x 20cm)  
 • 11ga (0.28mm) vinyl  
 • Realistic Printing  
 • 2 heavy duty handles  
 • Repair patch  
 • Shelf box  
 • 220 lb (100 kg) max weight limit  
 6 ea, 19.9 lb (9.1 kg)



*delish*



58752EU/EP  
**SLICED PIZZA MAT**  
 • Deflated 69" x 57" (1.75m x 1.45m)  
 • Inflated 63" L x 54" W x 9" H (1.60m x 1.37m x 23cm)  
 • 12ga (0.30mm) vinyl  
 • Realistic pizza design  
 • 4 easy-to-use connectors  
 • U.S. Patent No. D759,180  
 • Repair patch  
 • Shelf box  
 • 220 lb (100 kg) max weight limit  
 6 ea, 25.6 lb (11.7 kg)



58779EU/EP  
**POPPIN POPCORN MAT**  
 • Deflated 70" x 49" (1.78m x 1.24m)  
 • Inflated 66" L x 42" W x 8" H (1.68m x 1.07m x 20cm)  
 • 12ga (0.30mm) vinyl  
 • Realistic Printing  
 • 2 heavy duty handles  
 • Repair patch  
 • Shelf box  
 • 220 lb (100 kg) max weight limit  
 4 ea, 18.0 lb (8.2 kg)



*Summer's Treats*

*Sweet*



58764EU/EP  
**SLICED KIWI MAT**

- Deflated 70" x 33½" (1.78m x 85cm)
- Inflated 67" L x 30" W x 6½" H (1.70m x 76cm x 17cm)
- 11ga (0.28mm) vinyl
- Realistic kiwi fruit design
- Repair patch
- Shelf box
- 220 lb (100 kg) max weight limit
- 6 ea, 16.8 lb (7.6 kg)



58781EU/EP  
**RED STRAWBERRY ISLAND**

- Deflated 66" x 56" (1.68m x 1.42m)
- Inflated 63" L x 52" W x 10" H (1.60m x 1.32m x 25cm)
- 12ga (0.30mm) vinyl
- Realistic strawberry design
- 2 heavy duty handles
- Repair patch
- Shelf box
- 220 lb (100 kg) max weight limit
- 4 ea, 13.7 lb (8.5 kg)



**Fruity!**



58763EU/EP  
**SLICED ORANGE MAT**

- Deflated 70" x 33½" (1.78m x 85cm)
- Inflated 67" L x 30" W x 6½" H (1.70m x 76cm x 17cm)
- 11ga (0.28mm) vinyl
- Realistic orange fruit design
- Repair patch
- Shelf box
- 220 lb (100 kg) max weight limit
- 6 ea, 16.8 lb (7.6 kg)



58761EU/EP  
**HAWAIIAN PINEAPPLE MAT**

- Deflated 85" x 49" (2.16m x 1.24m)
- Inflated 83" L x 45" W x 9" H (2.11m x 1.14m x 23cm)
- 12ga (0.30mm) vinyl
- Pineapple design
- Repair patch
- Shelf box
- 220 lb (100 kg) max weight limit
- 6 ea, 30.1 lb (13.7 kg)

**Juicy!**

**Stay Fresh!**



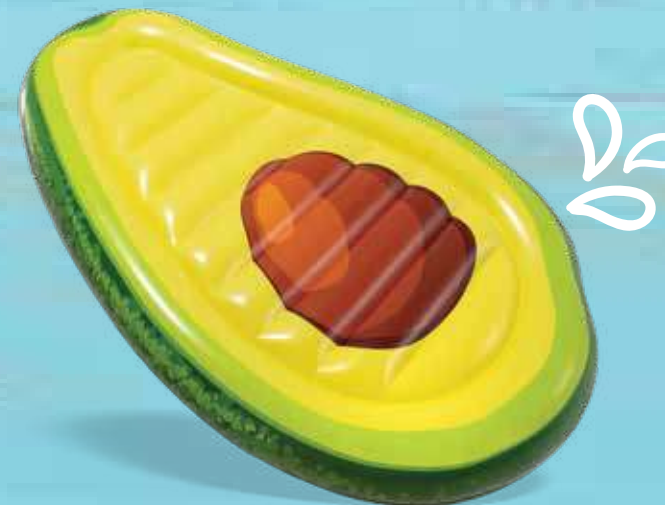
56283EU/EP  
**JUICY WATERMELON ISLAND**

- Deflated 77" (1.96m)
- Inflated 72" x 9" (1.83m x 23cm)
- 12ga (0.30mm) vinyl
- Heavy duty grab rope
- Refreshing design
- Repair patch
- Shelf box
- 440 lb (200 kg) max weight limit
- 4 ea, 31.6 lb (14.4 kg)

NEW

58769EU/EP  
**YUMMY AVOCADO MAT**

- Deflated 71" x 46" (1.80m x 1.17m)
- Inflated 66" L x 41" W x 8" H (1.68m x 1.04m x 20cm)
- 12ga (0.30mm) vinyl
- Fun and yummy avocado design
- Repair patch
- Shelf box
- 220 lb (100 kg) max weight limit
- 4 ea, 15.6 lb (7.1 kg)



58075NP/EP  
**WATERMELON BALL**

- Deflated 42" (1.07m)
- Inflated 28" (71cm)
- 9ga (0.23mm) vinyl
- Realistic watermelon design
- Repair patch
- Shelf box
- 12 ea, 14.3 lb (6.5 kg)

AGE 3+



# TAME THE BULL



56280EU/EP

### INFLATABULL™

- Deflated 100" x 84" (2.54m x 2.13m)
- Inflated 94" L x 77" W x 32" H (2.39m x 1.96m x 81cm)
- 3 air chambers
- 5 heavy duty handles to hold on to
- Outer ring to ensure balance and safety
- Repair patch
- Shelf box
- 220 lb (100 kg) max weight limit
- 2 ea, 29.7 lb (13.5 kg)

AGE 9+



INFLATABULL™ used under license from David Dial.



©The Professional Bull Riders & IMG College 1994-2018



# WILD ADVENTURE



hello,  
summer!



58785EU/EP  
**PLAYFUL PUG ISLAND**

- Deflated 68" x 51" (1.73m x 1.30m)
- Inflated 64" L x 47" W x 8" H (1.63m x 1.19m x 20cm)
- 11 ga (0.28mm) vinyl
- Realistic Printing
- 2 heavy duty handles
- Repair patch
- Shelf box
- 220 lb (100 kg) max weight limit
- 6 ea, 22.9 lb (10.4 kg)



58772EU/EP  
**TROPICAL ISLAND MATS**

- Deflated 70" x 33" (1.78m x 84cm)
- Inflated 67" L x 30" W x 8½" H (1.70m x 76cm x 22cm)
- 11 ga (0.28mm) vinyl
- Repair patch
- Shelf box
- 220 lb (100 kg) max weight limit
- 6 ea, asst, 19.6 lb (8.9 kg)



chill

meow

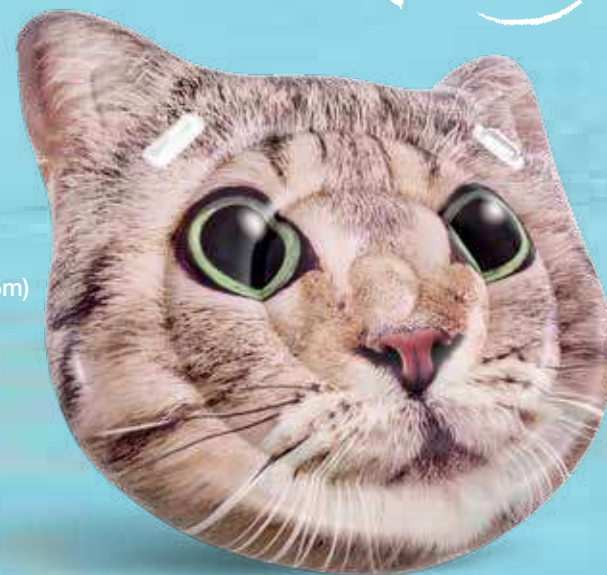


57254EU/EP  
**COOL EMOJI ISLAND**

- Deflated 74" (1.88m)
- Inflated 68" x 10½" (1.73m x 27cm)
- 12ga (0.30mm) vinyl
- All-around grab rope
- Repair patch
- Shelf box
- 440 lb (200 kg) max weight limit
- 4 ea, 26.6 lb (12.1 kg)

58784EU/EP  
**CURIOUS CAT ISLAND**

- Deflated 58" x 53" (1.47m x 1.35m)
- Inflated 54" L x 51" W x 9" H (1.37m x 1.30m x 23cm)
- 11 ga (0.28mm) vinyl
- Realistic Printing
- 2 heavy duty handles
- Repair patch
- Shelf box
- 220 lb (100 kg) max weight limit
- 6 ea, 23.6 lb (10.7 kg)



# Aloha



58782EU/EP  
**PALM LEAF MAT**

- Deflated 84" x 56" (2.13m x 1.42m)
- Inflated 81" L x 52" W x 8" H (2.06m x 1.32m x 20cm)
- 12ga (0.30mm) vinyl
- Realistic Printing
- Repair patch
- Shelf box
- 220 lb (100 kg) max weight limit
- 4 ea, 18.9 lb (8.6 kg)



58783EU/EP  
**RED ROSE MAT**

- Deflated 54" x 52" (1.37m x 1.32m)
- Inflated 50" L x 47" W x 9½" H (1.27m x 1.19m x 24cm)
- 11ga (0.28mm) vinyl
- Realistic Printing
- 2 heavy duty handles
- Repair patch
- Shelf box
- 220 lb (100 kg) max weight limit
- 6 ea, 20.5 lb (9.3 kg)



57250EU/EP  
**GLAMOROUS PEACOCK ISLAND**

- Deflated 88" x 82" (2.24m x 2.08m)
- Inflated 76" L x 64" W x 37" H (1.93m x 1.63m x 94cm)
- 13ga (0.33mm) vinyl
- Vibrant colors
- Peacock design
- 2 heavy duty handles
- 3 air chambers
- Repair patch
- Shelf box
- 440 lb (200 kg) max weight limit
- 4 ea, 32.5 lb (14.8 kg)

AGE 6+



**THE GLOBAL ANGEL WINGS PROJECT**

Colette Miller created the Global Angel Wings Project in 2012, in the streets of Los Angeles, the City of Angels. They were painted to remind humanity that we are the angels of this earth. They are human sized interactive public art, wings that people take photos with and thus become part of the work. The first pair was just street art but the response was natural, immediate, and spontaneous - from people of all sorts and backgrounds. Colette has painted wings globally - Kenya, Australia, Taiwan, France, Cuba, Juarez Mexico, and more, and many in the USA. Though some are commissioned and others gifted, the wings themselves are free to the world, never owned by anyone, not even Colette, though they are of her provenance and her work.



58786EU/EP  
**ANGEL WINGS MAT**

- Deflated 99" x 63" (2.51m x 1.60m)
- Inflated 85" L x 61" W x 8" H (2.16m x 1.55m x 20cm)
- 12ga (0.30mm) vinyl
- Realistic Printing
- 2 heavy duty handles
- Repair patch
- Shelf box
- 220 lb (100 kg) max weight limit
- 4 ea, 30.5 lb (13.9 kg)





# SPLASH into Summer

- 57500NP/EP  
FLAMINGO DRINK HOLDERS**
- Deflated 13" x 10" (33cm x 25cm)
  - Inflated 11" L x 10" W x 8" H (28cm x 25cm x 20cm)
  - 8ga (0.20mm) vinyl
  - Floating flamingo drink holder
  - 3pcs per set
  - Shelf box
  - 12 ea, 5.5 lb (2.5 kg)



- 57556NP/EP  
BABY DUCK RIDE-ON**
- Deflated 63" x 46½" (1.60m x 1.18m)
  - Inflated 58" L x 58" W x 32" H (1.47m x 1.47m x 81cm)
  - 12ga (0.30mm) vinyl
  - Great for riding, playing or lounging
  - 2 heavy duty handles
  - 2 air chambers
  - Repair patch
  - Shelf box
  - 4 ea, 19.0 lb (8.6 kg)



- 57556NP AGE 3+  
88 lb (40 kg) max weight limit**

- 57556EP AGE 14+  
220 lb (100 kg) max weight limit**

- 57286EU/EP  
MEGA DUCK ISLAND**
- Deflated 88" x 67" (2.24m x 1.70m)
  - Inflated 80" L x 80" W x 44" H (2.03m x 2.03m x 1.12m)
  - 14ga (0.35mm) vinyl
  - Great for riding, playing or lounging
  - 2 heavy duty handles
  - 2 air chambers
  - Repair patch
  - Shelf box
  - 440 lb (200 kg) max weight limit
  - 2 ea, 20.6 lb (9.4 kg)



- 57557NP/EP  
MAJESTIC SWAN RIDE-ON**
- Deflated 69" x 69" (1.75m x 1.75m)
  - Inflated 51" L x 40" W x 39" H (1.30m x 1.02m x 99cm)
  - 12ga (0.30mm) vinyl
  - Great for riding, playing or lounging
  - 2 heavy duty handles
  - 2 air chambers
  - Repair patch
  - Shelf box
  - 4 ea, 17.2 lb (7.8 kg)

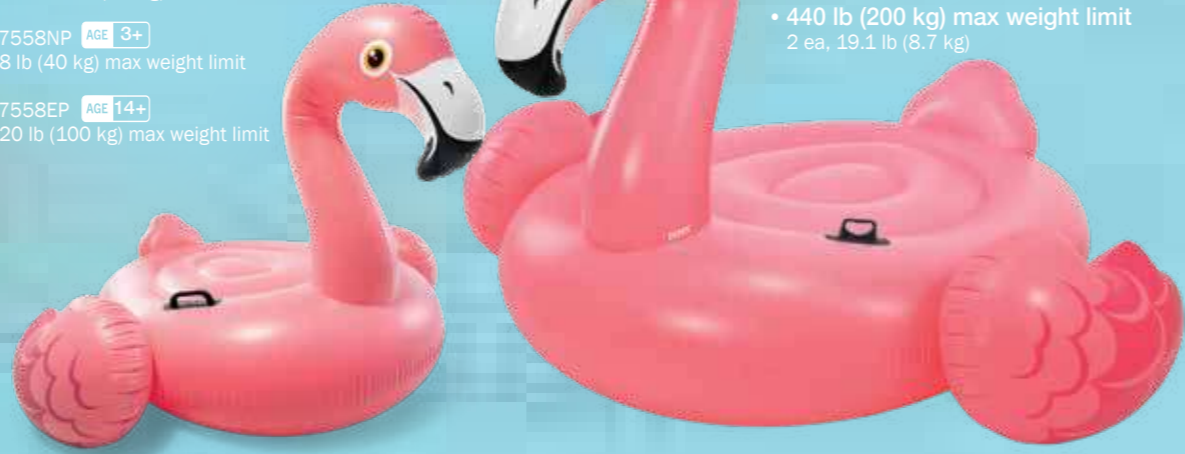


- 57557NP AGE 3+  
88 lb (40 kg) max weight limit**

- 57557EP AGE 14+  
220 lb (100 kg) max weight limit**



- 57558NP/EP  
PINK FLAMINGO RIDE-ON**
- Deflated 70" x 53" (1.78m x 1.35m)
  - Inflated 56" L x 54" W x 38" H (1.42m x 1.37m x 97cm)
  - 12ga (0.30mm) vinyl
  - Great for riding, playing or lounging
  - 2 heavy duty handles
  - 2 air chambers
  - Repair patch
  - Shelf box
  - 4 ea, 17.4 lb (7.9 kg)



- 57558NP AGE 3+  
88 lb (40 kg) max weight limit**

- 57558EP AGE 14+  
220 lb (100 kg) max weight limit**

- 57506NP/EP  
UNICORN DRINK HOLDERS**
- Deflated 16" x 8" (41cm x 20cm)
  - Inflated 15" L x 6½" W x 8" H (38cm x 17cm x 20cm)
  - 8ga (0.20mm) vinyl
  - Floating unicorn drink holder
  - 3pcs per set
  - Shelf box
  - 12 ea, 4.7 lb (2.2 kg)

AGE 2+

- 57291EU/EP  
MEGA UNICORN ISLAND**
- Deflated 124" x 87" (3.15m x 2.21m)
  - Inflated 99" L x 64" W x 57" H (2.51m x 1.63m x 1.45m)
  - 14ga (0.35mm) vinyl
  - Colorful unicorn
  - 2 heavy duty handles
  - 2 air chambers
  - Repair patch
  - Shelf box
  - 440 lb (200 kg) max weight limit
  - 2 ea, 18.7 lb (8.5 kg)

AGE 3+

AGE 14+

AGE 14+



- 57561NP/EP  
ENCHANTED UNICORN RIDE-ON**
- Deflated 89" x 68" (2.26m x 1.73m)
  - Inflated 78" L x 55" W x 38" H (1.98m x 1.40m x 97cm)
  - 12ga (0.30mm) vinyl
  - Colorful unicorn
  - 2 heavy duty handles
  - 2 air chambers
  - Repair patch
  - Shelf box
  - 4 ea, 17.3 lb (7.9 kg)

AGE 3+

AGE 14+

- 57561EP AGE 14+  
220 lb (100 kg) max weight limit**



- 57559NP/EP  
TROPICAL FLAMINGO RIDE-ON**
- Deflated 70" x 53" (1.78m x 1.35m)
  - Inflated 56" L x 54" W x 38" H (1.42m x 1.37m x 97cm)
  - 12ga (0.30mm) vinyl
  - 2 heavy duty handles
  - 2 air chambers
  - Repair patch
  - Shelf box
  - 4 ea, 17.4 lb (7.9 kg)

- 57559NP AGE 3+  
88 lb (40 kg) max weight limit**

- 57559EP AGE 14+  
220 lb (100 kg) max weight limit**

- 57294EU/EP  
MEGA LLAMA ISLAND**
- Deflated 100" x 63" (2.54m x 1.60m)
  - Inflated 79" L x 58" W x 68" H (2.01m x 1.47m x 1.73m)
  - 14ga (0.35mm) vinyl
  - 2 heavy duty handles
  - 2 air chambers
  - Repair patch
  - Shelf box
  - 440 lb (200 kg) max weight limit
  - 2 ea, 18.2 lb (8.3 kg)

AGE 3+

AGE 14+

AGE 14+



- 57564NP/EP  
CUTE LLAMA RIDE-ON**
- Deflated 73" x 41" (1.85m x 1.04m)
  - Inflated 53" L x 37" W x 44" H (1.35m x 94cm x 1.12m)
  - 12ga (0.30mm) vinyl
  - 2 heavy duty handles
  - 2 air chambers
  - Repair patch
  - Shelf box
  - 4 ea, 14.7 lb (6.7 kg)

- 57564NP AGE 3+  
88 lb (40 kg) max weight limit**

- 57564EP AGE 14+  
220 lb (100 kg) max weight limit**

- 57296EU/EP  
UNICORN PARTY ISLAND**
- Deflated 182" x 160" (4.62m x 4.06m)
  - Inflated 169" L x 119" W x 60" H (4.29m x 3.02m x 1.52m)
  - 20ga (0.50mm) vinyl
  - Detachable boarding platform
  - 4 cup holders

- 2 heavy duty handles
- Repair patch
- Shelf box
- 880 lb (400 kg) max weight limit
- 1 ea, 34.8 lb (15.8 kg)



- 57297EU/EP  
FLAMINGO PARTY ISLAND**
- Deflated 151" x 115" (3.84m x 2.92m)
  - Inflated 141" L x 124" W x 64" H (3.58m x 3.15m x 1.63m)
  - 20ga (0.50mm) vinyl
  - Detachable boarding platform
  - 4 cup holders
  - 2 heavy duty handles

- Repair patch
- Shelf box
- 880 lb (400 kg) max weight limit
- 1 ea, 33.0 lb (15.0 kg)



# Sweet Dreams

58639E (110-120V)  
58640 (220-240V)  
**QUICK-FILL™ AC ELECTRIC PUMP**

- 3 interconnecting nozzles
- Inflates and deflates
- Thermo Protector incorporated for safety
- TUV approved (110 - 120V)
- GS, CE approved (220 - 240V)
- Shelf box

6 ea, 8.5 lb (3.9 kg)



indoor use



110-120V AC  
220-240V AC



nozzles fit  
any valve size

68697/E

## LED OTTOMAN

- Inflated 34" x 13" (86cm x 33cm)
- Great for indoor or outdoor use
- IPX8 waterproof
- 5-hour auto shut-off
- Rechargeable 2500mAh battery
- 12 white LED lights, 2.4W
- 1 RGB LED light, 3W
- USB cord for charging (wall charger not included)
- Repair patch
- Shelf box
- 220 lb (100 kg) max weight limit

3 ea, 10.3 lb (4.7 kg)



68695/E

## LED FLOATING GLOBE

- Inflated 35" x 31" (89cm x 79cm)
- Great for indoor or outdoor use
- IPX8 waterproof
- 5-hour auto shut-off
- Rechargeable 2500mAh battery
- 12 white LED lights, 2.4W
- 1 RGB LED light, 3W
- USB cord for charging (wall charger not included)
- Repair patch
- Shelf box

3 ea, 11.9 lb (5.4 kg)



68693/E

## LED FLOATING CRESCENT

- Inflated 53" L x 17" W x 35" H (1.35m x 43cm x 89cm)
- Great for indoor or outdoor use
- IPX8 waterproof
- 5-hour auto shut-off
- Rechargeable 2500mAh battery
- 12 white LED lights, 2.4W
- 1 RGB LED light, 3W
- USB cord for charging (wall charger not included)
- Repair patch
- Shelf box

3 ea, 8.4 lb (3.8 kg)



These outdoor LED Ottoman and accent lights provide fun lighting for any backyard! Choose between warm white or smooth changing multi-colored setting. Rechargeable battery lasts up to 5 hours.

